

TOPIC : Better integration of evidence on the impact of research and innovation in policy making

Adam Mickiewicz University Foundation - Poznan Science and Technology Park

Adam Mickiewicz University Foundation is a “non-profit” organisation with the general mission to stimulate collaboration between science and industry to activate the regional development via innovation, technology transfer and international cooperation. From 1995 AMU Foundation is running Poznan Science and Technology Park (PSTP) which is the oldest science park in Poland.

Within PSTP Amu Foundation runs 4 main activities:

- Start-ups incubation - including entrepreneurship courses at university, business plan competition, coaching start-ups, investment readiness and investors fora. PSTP as a seed-fund operator in 2013/2014 invested 1,5 mln euro in 13 technological start-ups. Pre-seed fund is now in preparation phase.
- Technology transfer and innovation promotion – scouting technologies, provision of information, consulting, assisting in technology transfer, science and business collaboration, academic entrepreneurship. In 2013 8 technology transfer contract were signed with assistance of PSTP, of which 4 international.
- R&D activity: research services for companies, contracted research and “technology incubation” i.e. preparation and testing of technologies based on university research results through 12 research centres. PSTP owns patents – there are now 23 patents and patent applications.
- Infrastructure provision – rental of equipped laboratories and office space, creation of innovation friendly environment. There are now 70 tenants in PSTP: R&D centres of large companies, technology start-ups and innovative SMEs as well as some research institutions.

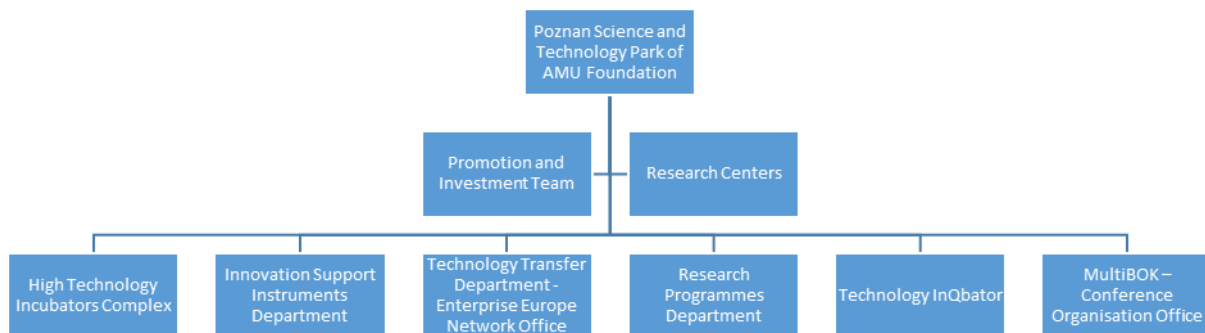
Besides that the AMU Foundation developed numerous activities directed to the companies, research organisations as well a public sector in the region of Wielkopolska, where AMU Foundation is located, and the whole of Poland. AMU Foundation is involved in a public mission activities as well as consultancy services.

The public mission includes promotion of entrepreneurship and incubation services for start-ups, information and advice on European research programmes in the Wielkopolska region, involvement in regional innovation policy development. The consulting services include support for development of innovation policy strategies and tools and surveys, workshops and publications on innovation support tools and policies.

AMU Foundation is experienced in coordination of the European projects and employs experienced staff. They participate in panels elaborating and consulting different types of local and central strategies. PSTP has gained wide recognition in the research and business community in the region of Wielkopolska.

One of the part of AMU Foundation is also the EU Framework Programmes Regional Contact Point. AMU Foundation has been contributing to rising awareness of research and entrepreneurship community about the EU Framework Programmes. RCP organises numerous events and consultations and provides also services of information helpdesk and partner search. The RCP is located within the Research Programmes Department.

Enterprise Europe Network office is embedded within the Technology Transfer Department of Partner 2 since beginning of the Network. Earlier Technology Transfer Department was also involved as partner in Innovation Relay Centres network. The Technology Transfer Department is one of the main departments of AMU Foundation. The organigram of AMU Foundation is shown below:



PSTP is a key player in the regional innovation system, working in partnership with the regional authorities. Park has been involved in elaboration of 1st regional innovation strategy (RIS) and recently of smart specialisation strategy. In 2004-2006 PSTP acted as Implementing Body for one of ROP measure related RIS implementation. PSTP has experience and expertise in development of innovation policy instruments (eg. FP6: 5Schemes, INTERREG IVC: Know-Hub, GPs and recommendations for national agency for SMEs development, FP7: MaPEeR SME).

PSTP is recognised by Marshall Office of Wielkopolska as a partner supplying expertise and process leading capacity in innovation policy area. It is a key player in a regional innovation system, well linked in a network (companies, R&D&I sector, intermediaries, local authorities). This capacity was proven successful in the influence on RIS and ROP, basing legitimacy in the stakeholder dialogue and unbiased analyses (fact-based) as well as non-profit region oriented mission of the organisation.

Park has a lot of experience in development of methodologies of monitoring and evaluation of regional innovation strategies. In SCINNPOLI (Scanning Innovation Policy Impact) project (INTERREG IVC) Action Plan for Wielkopolska region including methodology for Regional Observatory of Innovation and Regional Development was developed by PSTP in collaboration with regional authorities.

PSTP possible role in the project is contribution to development of the methodology for assessing the performance and impact of research and innovation as well as the ways in which public policies and funding can influence these, taking into account:

- Knowledge and experiences of PSTP in the field of regional and national schemes and measures focused on research and innovation ,
- PSTP experiences in development of methodologies of monitoring and evaluation of the regional innovation strategies,
- Experiences in dialogue with researches, public authorities responsible for policy development as well as SMEs.

Contact person:

Kamila Dobek
Manager of Innovation Support Instruments Department
Poznan Science and Technology Park of
Adam Mickiewicz University Foundation
phone: +48 61 827 97 57
kd@ppnt.poznan.pl
www.ppnt.poznan.pl